

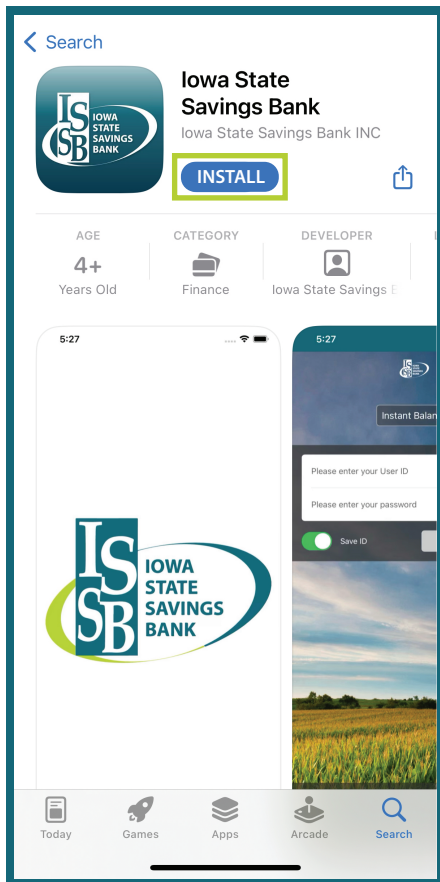
# MOBILE BANKING

*Enrollment Guide for customers with an Online Banking Login*

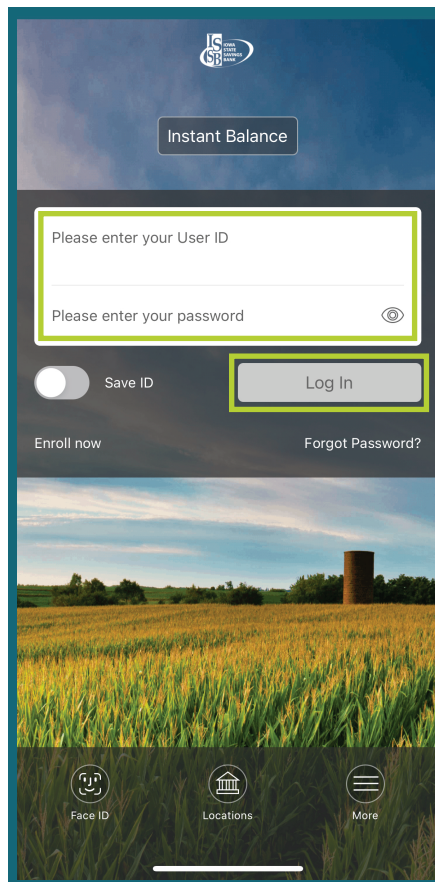


**Start** by opening the app store on your smartphone and download the ISSB Mobile App

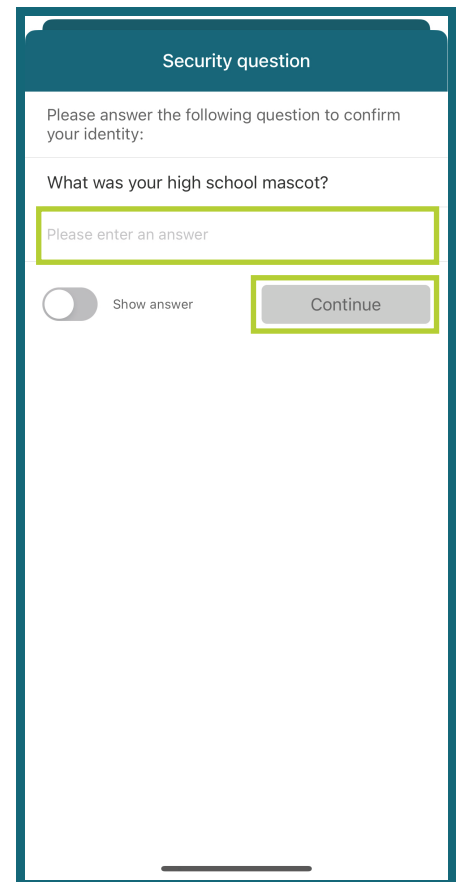
**1.** Install the ISSB Mobile App



**2.** Enter User ID and password (same as Online Banking). Click Log In.



**3.** Verify security question (set up during online banking enrollment). Click continue.



641-782-1000 | ISSBbank.com | Member FDIC